

STANDARD ARRIVAL  
CHART - INSTRUMENT  
(STAR) - ICAO

TRANSITION ALT  
10000 FT

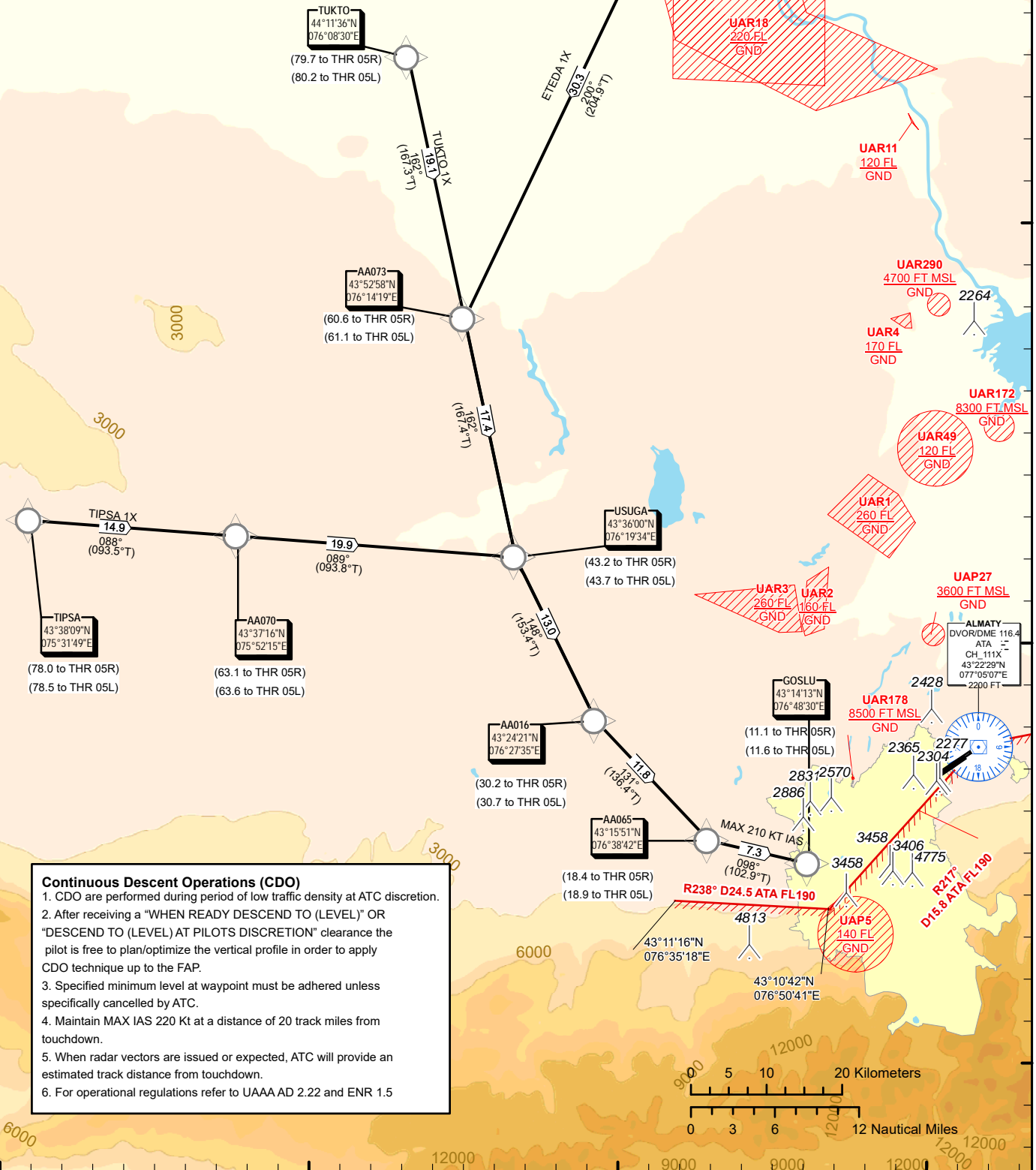
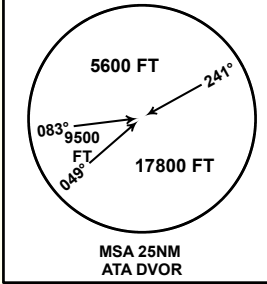
ALMATY APPROACH 118.3  
ALMATY RADAR 126.8  
ALMATY TOWER 119.4  
ALMATY ATIS (EN) 129.8  
ALMATY ATIS (RU) 135.1

(RNAV 1 STAR BASED ON GNSS)  
ETEDA 1X, TIPSA 1X, TUKTO 1X

ALMATY  
RWY 05L/05R

DIST IN NM  
ALT, ELEV IN FT  
BRG ARE MAGNETIC  
VAR5°E

SURVEILLANCE RADAR REQUIRED



Continuous Descent Operations (CDO)

1. CDO are performed during period of low traffic density at ATC discretion.
2. After receiving a "WHEN READY DESCEND TO (LEVEL)" OR "DESCEND TO (LEVEL) AT PILOTS DISCRETION" clearance the pilot is free to plan/optimize the vertical profile in order to apply CDO technique up to the FAP.
3. Specified minimum level at waypoint must be adhered unless specifically cancelled by ATC.
4. Maintain MAX IAS 220 Kt at a distance of 20 track miles from touchdown.
5. When radar vectors are issued or expected, ATC will provide an estimated track distance from touchdown.
6. For operational regulations refer to UAAA AD 2.22 and ENR 1.5

CHANGE: APP FREQ, editorial.

TABULAR DESCRIPTION

ETEDA 1X											
Serial Number	Path Descriptor	Waypoint Identifier	Fly - over	Course °M(°T)	Magnetic Variation(°)	Distance NM	Turn Direction	Altitude FT	Speed KT	VPA (°)	Navigation Specification
10	IF	ETEDA	-		5.12	0	-	+FL210/-FL340	315	-	RNAV1
20	TF	AA073	-	200(204.9)	5.12	30.3	R	+FL150/-FL230	280	-	RNAV1
30	TF	USUGA	-	162(167.4)	5.12	17.4	L	+11000/-FL170	280	-	RNAV1
40	TF	AA016	-	148(153.4)	5.12	13	L	+9000/-FL130	250	-	RNAV1
50	TF	AA065	-	131(136.4)	5.12	11.8	L	+6400/-8700	230	-	RNAV1
60	TF	GOSLU	-	98(102.9)	5.12	7.3	L	+5000/-6100	210	-	RNAV1

WAYPOINT LIST

ETEDA 1X		
Waypoint Identifier	Coordinates	
ETEDA	442024.00N	0763206.00E
AA073	435258.16N	0761419.19E
USUGA	433600.00N	0761934.00E
AA016	432421.37N	0762734.78E
AA065	431550.67N	0763842.35E
GOSLU	431413.06N	0764829.77E

TABULAR DESCRIPTION

TIPSA 1X											
Serial Number	Path Descriptor	Waypoint Identifier	Fly - over	Course °M(°T)	Magnetic Variation(°)	Distance NM	Turn Direction	Altitude FT	Speed KT	VPA (°)	Navigation Specification
10	IF	TIPSA	-		5.12	0	-	+FL180/-FL300	315	-	RNAV1
20	TF	AA070	-	88(93.5)	5.12	14.9	R	+FL150/-FL240	280	-	RNAV1
30	TF	USUGA	-	89(93.8)	5.12	19.9	R	+11000/-FL170	280	-	RNAV1
40	TF	AA016	-	148(153.4)	5.12	13	R	+9000/-FL130	250	-	RNAV1
50	TF	AA065	-	131(136.4)	5.12	11.8	L	+6400/-8700	230	-	RNAV1
60	TF	GOSLU	-	98(102.9)	5.12	7.3	L	+5000/-6100	210	-	RNAV1

WAYPOINT LIST

TIPSA 1X		
Waypoint Identifier	Coordinates	
TIPSA	433809.00N	0753149.00E
AA070	433716.27N	0755214.81E
USUGA	433600.00N	0761934.00E
AA016	432421.37N	0762734.78E
AA065	431550.67N	0763842.35E
GOSLU	431413.06N	0764829.77E

TABULAR DESCRIPTION

TUKTO 1X											
Serial Number	Path Descriptor	Waypoint Identifier	Fly - over	Course °M(°T)	Magnetic Variation(°)	Distance NM	Turn Direction	Altitude FT	Speed KT	VPA (°)	Navigation Specification
10	IF	TUKTO	-		5.12	0	-	+FL190/-FL300	315	-	RNAV1
20	TF	AA073	-	162(167.3)	5.12	19.1	R	+FL150/-FL230	280	-	RNAV1
30	TF	USUGA	-	162(167.4)	5.12	17.4	R	+11000/-FL170	280	-	RNAV1
40	TF	AA016	-	148(153.4)	5.12	13	L	+9000/-FL130	250	-	RNAV1
50	TF	AA065	-	131(136.4)	5.12	11.8	L	+6400/-8700	230	-	RNAV1
60	TF	GOSLU	-	98(102.9)	5.12	7.3	L	+5000/-6100	210	-	RNAV1

WAYPOINT LIST

TUKTO 1X		
Waypoint Identifier	Coordinates	
TUKTO	441136.00N	0760830.00E
AA073	435258.16N	0761419.19E
USUGA	433600.00N	0761934.00E
AA016	432421.37N	0762734.78E
AA065	431550.67N	0763842.35E
GOSLU	431413.06N	0764829.77E